

EARTHWORKS HAND DYED WOOL 2008



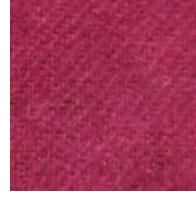
LEMON YELLOW



ORANGE



FIRE RED



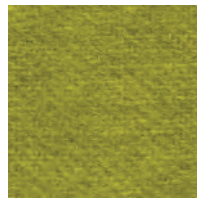
FUCHSIA



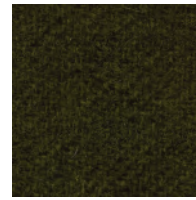
PEPPERMINT



DONKEY BROWN



CHARTREUSE



OLIVE



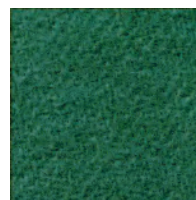
AQUA



TURQUOISE



COBALT



JUNGLE GREEN

© 2008 SUE SPARGO AND WENDY MORRIS

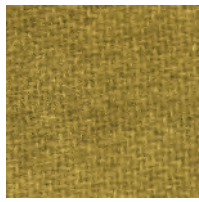
Our wool is hand dyed in small quantities creating fabric that is unique. While we strive to create consistency changes in dyes, water, temperature, humidity and fibre can affect the dye lots and so variations in color and mottling may occur.

This chart is for reference only, please keep in mind that your computer and printer may render the colors differently and may not reflect the colors accurately.

EARTHWORKS HAND DYED WOOL



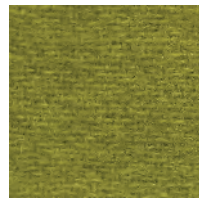
OATMEAL



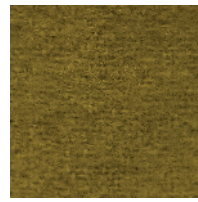
CHARDONNAY



SPRING GRASS



LIME



SUES GREEN



LEMONGRASS



HOPS



BRONZE



LODEN



CARAMEL



MUSTARD BROWN



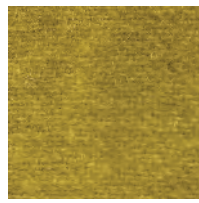
BITTERSWEET



VANILLA GRASS



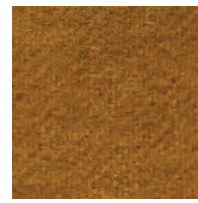
PRAIRIE



TANSY



MUSTARD



WILD HONEY



SPICE



RED SQUIRREL



BLUSH



PAPRIKA



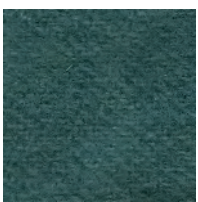
UNIFORM RED



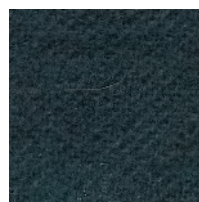
CLARET



SEA FOAM



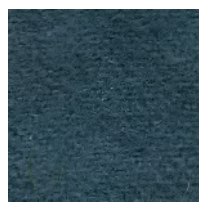
AEGEAN SEA



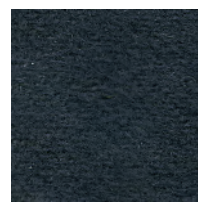
DEEP TEAL



MEDITERRANEAN



FADED INDIGO



ANTIQUÉ NAVY



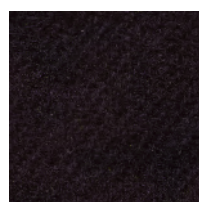
MILK THISTLE



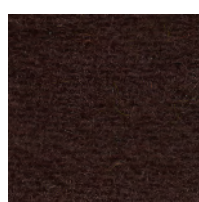
CHIVE BLOSSOM



VIOLET



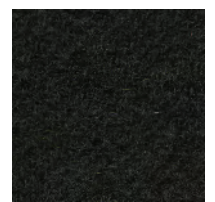
MULBERRY



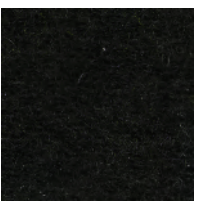
PLOUGHED EARTH



PEAT



CHARCOAL



SOOT

© 2003 SUE SPARGO AND WENDY MORRIS

Our wool is hand dyed in small quantities creating fabric that is unique. While we strive to create consistency changes in dyes, water, temperature, humidity and fibre can affect the dye lots and so variations in color and mottling may occur.

This chart is for reference only, please keep in mind that your computer and printer may render the colors differently and may not reflect the colors accurately.